

Job Name:

System Reference:

Date:

Indoor Unit:

PLA-A30EA7



Outdoor Unit:

 PUZ-A30NHA7 PUZ-A30NHA7-BS**INDOOR UNIT FEATURES**

- Space-efficient ductless installation
- Equipped with 3D i-see Sensor™ for enhanced comfort and energy efficiency
- Airflow settings for high and low ceiling applications
- Individual vane settings for direct/indirect airflow control or variable airflow patterns
- Knockouts for outside-air intake and branch-duct run
- Filter indicator signal
- Easy-to-clean, washable filter (optional high-efficiency filter available - requires multi-function casement)
- Built-in condensate lift mechanism
- Ideal for retail shops, classrooms, office spaces, conference centers, building lobbies, and more

OUTDOOR UNIT FEATURES

- Variable speed INVERTER-driven compressor
- Suction accumulator pre-charged with refrigerant volume for piping length up to 100 ft (70 ft. for A12/18/24/30)
- 24-hour continuous operation (cooling mode)
- High pressure protection
- Fast restart due to bypass valve make it ideal for equipment cooling applications, such as data centers
- Superior energy and operational efficiency

SPECIFICATIONS: PLA-A30EA7 & PUZ-A30NHA7(-BS)

Model number	Indoor unit		PLA-A30EA7
	Outdoor unit		PUZ-A30NHA7
			PUZ-A30NHA7-BS
Cooling*1	Maximum Capacity	Btu/h	30,000
	Rated Capacity	Btu/h	30,000
	Minimum Capacity	Btu/h	9,000
	Maximum Power Input	W	2,540
	Rated Power Input	W	2,540
	Moisture Removal	Pints/h	5.4
	Sensible Heat Factor		0.80
	Power factor	%	95.2
Heating at 47° F*2	Maximum Capacity	Btu/h	33,000
	Rated Capacity	Btu/h	32,000
	Minimum Capacity	Btu/h	9,000
	Maximum Power Input	W	2,450
	Rated Power Input	W	2,400
	Power factor	%	95.7
Heating at 17° F *3	Maximum Capacity	Btu/h	20,800
	Rated Capacity	Btu/h	18,100
	Maximum Power Input	W	1,990
	Rated Power Input	W	1,880
Efficiency	SEER		22.8
	EER *1		11.8
	HSPF (IV)		11.6
	COP at 47° F *2		3.90
	COP at 17° F *3		2.82
Electrical	Voltage, Phase, Frequency		208 / 230V, 1-phase, 60 Hz
	Guaranteed Voltage Range	V AC	187 - 253
	Voltage: Indoor - Outdoor, S1-S2	V AC	208V / 230
	Voltage: Indoor - Outdoor, S2-S3	V DC	24
	Voltage: Indoor - Remote controller	V DC	12
	Recommended Fuse/Breaker Size	A	30
	Recommended Wire Size (Indoor - Outdoor)	AWG	14
Indoor unit	MCA	A	1.00
	Fan Motor Full Load Amperage	A	0.74
	Fan Motor Output	W	120

SPECIFICATIONS: PLA-A30EA7 & PUZ-A30NHA7(-BS)

Model number	Indoor unit		PLA-A30EA7
	Outdoor unit		PUZ-A30NHA7
			PUZ-A30NHA7-BS
	Airflow Rate, Dry	CFM	570-670-780-880
	Airflow Rate, Wet	CFM	530-630-740-840
	External Static Pressure	in.WG	n/a
	Sound Pressure Level	dB(A)	28-32-35-38
	Drain Pipe Size	In. (mm)	1-1/4 (32)
	Condensate Lift Mechanism, Max. Distance	In. (mm)	33-7/16 (860)
	Heat Exchanger Type		Plate fin coil
	External Finish Color		White Munsell 6.4Y 8.9/0.4
	Unit Dimensions // Grille Dimensions	W: In. (mm)	33-1/16 (840) // 37-13/32 (950)
		D: In. (mm)	33-1/16 (840) // 37-13/32 (950)
		H: In. (mm)	11-3/4 (298) // 1-9/16 (40)
	Package Dimensions // Grille Dimensions	W: In. (mm)	35-9/16 // 39-6/16
		D: In. (mm)	34-5/16 // 38-3/16
		H: In. (mm)	16-9/16 // 4-12/16
Unit Weight // Grille Weight	Lbs. (kg)	56 (25) // 11 (5)	
Package Weight	Lbs. (kg)	77 (35)	
Indoor unit operating temperature range	Cooling Intake Air Temp (Maximum / Minimum)	°F	90 DB, 73 WB / 66 DB, 59 WB
	Heating Intake Air Temp (Maximum / Minimum)	°F	82 DB / 50 DB
Outdoor unit	MCA	A	19
	MOCP	A	26
	Fan Motor Full Load Amperage	A	0.40
	Fan Motor Output	W	86
	Airflow Rate	CFM	1,940
	Refrigerant Control		Electronic Expansion Valve
	Defrost Method		Reverse Cycle
	Heat Exchanger Type		Cross fin
	Sound Pressure Level, Cooling*1	dB(A)	47
	Sound Pressure Level, Heating*2	dB(A)	48
	Compressor Type		Inverter-driven twin rotary
	Compressor Model		SNB172FVHM1
	Compressor Rated Load Amps	A	7
	Compressor Locked Rotor Amps	A	11

SPECIFICATIONS: PLA-A30EA7 & PUZ-A30NHA7(-BS)

Model number	Indoor unit		PLA-A30EA7
	Outdoor unit		PUZ-A30NHA7
			PUZ-A30NHA7-BS
	Compressor Oil Type // Charge	oz.	FV50S // 23
	External Finish Color		Ivory Munsell 3Y 7.8/1.1
	Base pan heater		n/a
	Unit Dimensions	W: In. (mm)	37-13/32 (950)
		D: In. (mm)	13 + 1-3/16 (330 + 30)
		H: In. (mm)	37-1/8 (943)
	Package Dimensions	W: In. (mm)	40-15/16
		D: In. (mm)	17-11/16
		H: In. (mm)	40-11/16
	Unit Weight	Lbs. (kg)	153 (69)
	Package Weight	Lbs. (kg)	112 (51)
Outdoor unit operating temperature range	Cooling Intake Air Temp (Maximum / Minimum)	°F	115 DB / 0* DB
	Heating Intake Air Temp (Maximum / Minimum)	°F	70 DB, 59 WB / -4 DB, -4 WB
	Thermal Lock-out / Re-start Temperatures**	°F	-8 / -4 DB
Refrigerant	Type		R410A
	Charge	Lbs, oz	7 lbs, 11 oz
Piping	Gas Pipe Size O.D. (Flared)	In.(mm)	5/8 (15.88)
	Liquid Pipe Size O.D. (Flared)	In.(mm)	3/8 (9.52)
	Maximum Piping Length	Ft. (m)	165 (50)
	Maximum Height Difference	Ft. (m)	100 (30)
	Maximum Number of Bends		15

AHRI Rated Conditions (Rated data is determined at a fixed compressor speed)	*1 Cooling (Indoor // Outdoor)	°F	80°F DB, 67°F WB // 95°F DB, 75°F WB
	*2 Heating at 47°F (Indoor // Outdoor)	°F	70°F DB, 60°F WB // 47°F DB, 43°F WB
	*3 Heating at 17°F (Indoor // Outdoor)	°F	70°F DB, 60°F WB // 17°F DB, 15°F WB
Conditions	*4 Heating at 5°F (Indoor // Outdoor)	°F	70°F DB, 60°F WB // -4°F DB, -5°F WB

Notes

*Wind baffles required to operate below 23°F DB in cooling mode. PUZ with wind baffle: 0°F - 115°F.

**System cuts out in heating mode to avoid thermistor error and automatically restarts at these temperatures

SPECIFICATIONS: PLA-A30EA7 & PUZ-A30NHA7(-BS)

SEACOAST PROTECTION

External Outer Panel: Phosphate coating + Acrylic-Enamel coating

Fan Motor Support: Epoxy resin coating (at edge face)

Separator Assembly; Valve Bed: Epoxy resin coating (at edge face)

“Blue Fin” treatment is an anti-corrosion treatment that is applied to the condenser coil to protect it against airborne contaminants.

Notes:

ACCESSORIES: PLA-A30EA7 & PUZ-A30NHA7(-BS)

PLA-A30EA7	
High Efficiency (MERV 10) Filter Element (Requires PAC-SJ41TM-E Multi-Function Casement)	<input type="checkbox"/> PAC-SH59KF-E
Grille with 3D i-see Sensor™	<input type="checkbox"/> PLP-40EAEU
Air outlet shutter Plate	<input type="checkbox"/> PAC-SJ37SP-E
Multi-functional Casement	<input type="checkbox"/> PAC-SJ41TM-E
Flange for fresh-air Intake	<input type="checkbox"/> PAC-SH65OF-E
3-Pole Disconnect Switch (30A/600V/UL) [fits 2" X 4" utility box]	<input type="checkbox"/> TAZ-MS303
Drain Pan Level Sensor (Control for indoor unit shut off to prevent drain pan overflow)	<input type="checkbox"/> DPLS2
Advanced Blue Diamond Mini-Condensation pump w/ Reservoir & Sensor (110V)	<input type="checkbox"/> X87-711 - 110
Advanced Blue Diamond Mini-Condensation pump w/ Reservoir & Sensor (208/230V)	<input type="checkbox"/> X87-721 - 208/230
Extension Cord for Blue Diamond Pump	<input type="checkbox"/> C13-103
MegaBlue Blue Diamond Condensate Pump (110-230V)	<input type="checkbox"/> X87-835
Remote Sensor (extensible)	<input type="checkbox"/> PAC-SE41TS-E
Connector for CN32 (remote on/off)	<input type="checkbox"/> PAC-SE55RA-E
Remote Operation Adapter (with wire terminals for remote on/off and operation status/error)	<input type="checkbox"/> PAC-SF40RM-E* ¹
External fan / Heater control relay adapter	<input type="checkbox"/> CN24RELAY-KIT-CM3
Backlit, wall-mounted, wireless	<input type="checkbox"/> MHK1
Wireless Remote Controller	<input type="checkbox"/> MRCH1
Wireless Receiver	<input type="checkbox"/> MFH1
Portable Central Controller	<input type="checkbox"/> MCCH1
Outside Air Sensor	<input type="checkbox"/> MOS1
Wireless adapter	<input type="checkbox"/> PAC-USWHS002-WF-1
BACnet® and Modbus Interface	<input type="checkbox"/> PAC-UKPRC001-CN-1
Wall-mounted, Wired	<input type="checkbox"/> PAC-YT53CRAU-J
Wired remote controller	<input type="checkbox"/> PAR-32MAA-J
T-STAT Interface	<input type="checkbox"/> PAC-US444CN-1
Wired remote controller	<input type="checkbox"/> PAR-32MAA
Signal Receiver	<input type="checkbox"/> PAR-SR3LA-E
Simple remote controller	<input type="checkbox"/> PAC-YT53CRAU
Wireless Remote Controller	<input type="checkbox"/> PAR-FL32MA-E
Wire for Remote ON/OFF with CN32 connector	<input type="checkbox"/> PAC-715AD
Lockdown Bracket for wireless, hand-held, remote controllers	<input type="checkbox"/> RCMKP1CB

*¹ Unable to use with wireless remote controller

ACCESSORIES: PLA-A30EA7 & PUZ-A30NHA7(-BS)

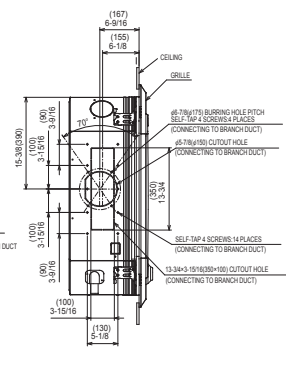
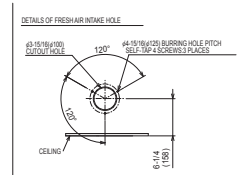
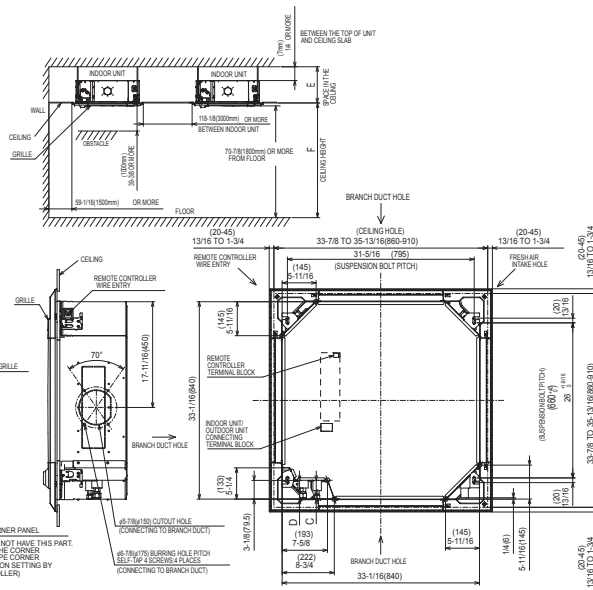
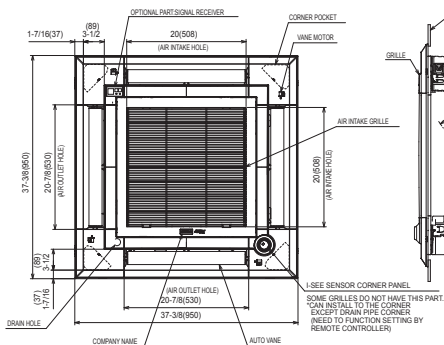
PUZ-A30NHA7(-BS)	
Air Outlet Guide	<input type="checkbox"/> PAC-SG59SG-E
Front Wind Baffle	<input type="checkbox"/> WB-PA5
Drain socket	<input type="checkbox"/> PAC-SG61DS-E
Centralized Drain Pan	<input type="checkbox"/> PAC-SG64DP-E
M-NET Converter	<input type="checkbox"/> PAC-SF83MA-E
Control/Service Tool	<input type="checkbox"/> PAC-SK52ST
Wall mounting bracket (Powder-coated Steel)	<input type="checkbox"/> QCWB2000M-1
Wall mounting bracket (316 Series Stainless Steel)	<input type="checkbox"/> QCWBSS
M-NET control adapter for Building Management System	<input type="checkbox"/> PAC-SF83MA-E
Outdoor Unit Mounting Pad 24" x 42" x 3"	<input type="checkbox"/> ULTRILITE2
Outdoor Unit 3-1/4 inch Mounting Base - Pair (Plastic)	<input type="checkbox"/> DSD-400N
MiniSplit Mounting Stand-Single Fan models - 12"	<input type="checkbox"/> QSMS1201M
MiniSplit Mounting Stand-Single Fan models - 18"	<input type="checkbox"/> QSMS1801M
MiniSplit Mounting Stand-Single Fan models - 24"	<input type="checkbox"/> QSMS2401M
3/8 x 5/8 x 10' / 1/2" Lineset (Twin-Tube Insulation)	<input type="checkbox"/> MPLS385812T-10
3/8 x 5/8 x 15' / 1/2" Lineset (Twin-Tube Insulation)	<input type="checkbox"/> MPLS385812T-15
3/8 x 5/8 x 30' / 1/2" Lineset (Twin-Tube Insulation)	<input type="checkbox"/> MPLS385812T-30
3/8 x 5/8 x 50' / 1/2" Lineset (Twin-Tube Insulation)	<input type="checkbox"/> MPLS385812T-50
3/8 x 5/8 x 65' / 1/2" Lineset (Twin-Tube Insulation)	<input type="checkbox"/> MPLS385812T-65
3/8 x 5/8 x 100' / 1/2" Lineset (Twin-Tube Insulation)	<input type="checkbox"/> MPLS385812T-100

DIMENSIONS: PLA-A30EA7 & PUZ-A30NHA7 (-BS)

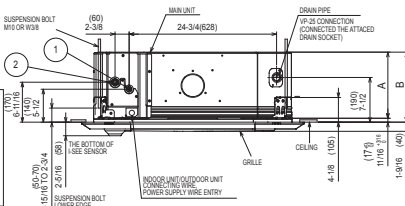
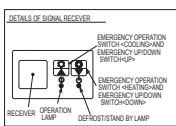
PLA-A30EA7

Unit: inch (mm)

- NOTE 1 CHOOSE THE GRILLE AMONG THE DEDICATED GRILLES.
- 2 REINFORCE THE SUSPENSION BOLT FOR EARTHQUAKE-RESISTANCE AS NEEDED.
- 3 FOR THE SUSPENSION BOLT, USE M10 OR W10.
- 4 FOR DRAIN PIPE, USE VP-250D (ø1-1/4" (ø32) PVC TUBE).
DRAIN PUMP INCLUSION.
- 5 ELECTRICAL BOX MAY BE REMOVED FOR THE SERVICE PURPOSE.
MAKE SURE TO SLACK THE ELECTRICAL WIRE LITTLE BIT FOR CONTROL POWER WIRES CONNECTION.
- 6 THE HEIGHT OF THE INDOOR UNIT IS ABLE TO BE ADJUSTED WITH THE GRILLE ATTACHED.
- 7 REQUIRES "C" OR MORE SPACE BETWEEN TRANSOM AND CEILING FOR THE INSTALLATION.
- 8 WHEN INSTALLING THE BRANCH DUCTS, BE SURE TO INSULATE ADEQUATELY OTHERWISE CONDENSATION AND DRIPPING MAY OCCUR.
(IT BECOMES THE CAUSE OF DROPLET OR BROCKET DRIPPING.)
- 9 AS FOR NECESSARY INSTALLATION SERVICE SPACE, PLEASE REFER TO THE RIGHT AT FIGURE.
- 10 FOR THE INSTALLATION OF THE OPTIONAL HIGH EFFICIENCY FILTER OR MULTI-FUNCTIONAL CASSETTE REFER TO SPECIAL DRAWING.

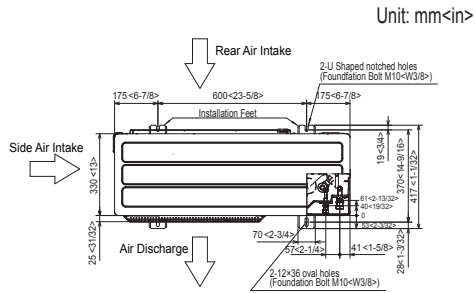
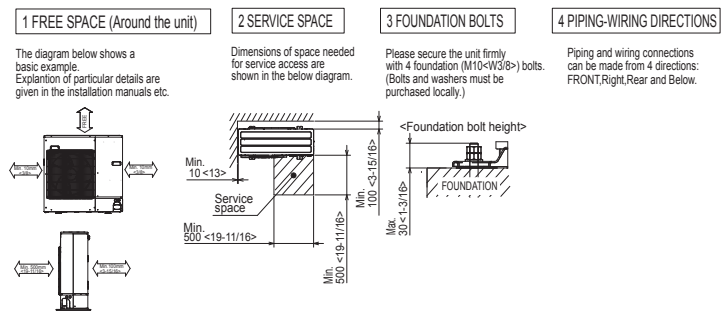


MODELS	PLA-A30EA7					
	(1)	(2)	A	B	C	D
PLA-A1210EA7	REFRIGERANT PIPE FLARED CONNECTION SIF	REFRIGERANT PIPE FLARED CONNECTION SIF	9-1/2 (241)	10-3/4 (271)	17-1/2 (441)	10-7/8 (276) OR MORE
PLA-A2442EA7	REFRIGERANT PIPE FLARED CONNECTION SIF	REFRIGERANT PIPE FLARED CONNECTION SIF	11-1/8 (291)	11-3/4 (298)	18-1/4 (465)	11-1/8 (291) OR MORE



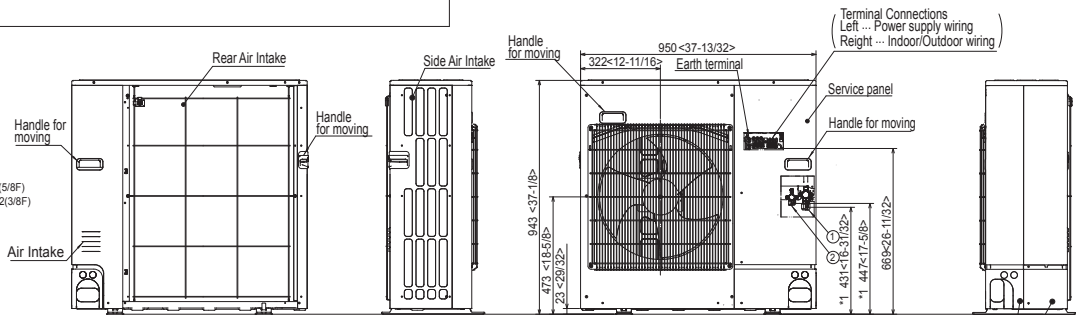
DIMENSIONS: PLA-A30EA7 & PUZ-A30NHA7 (-BS)

PUZ-A30NHA7(-BS)

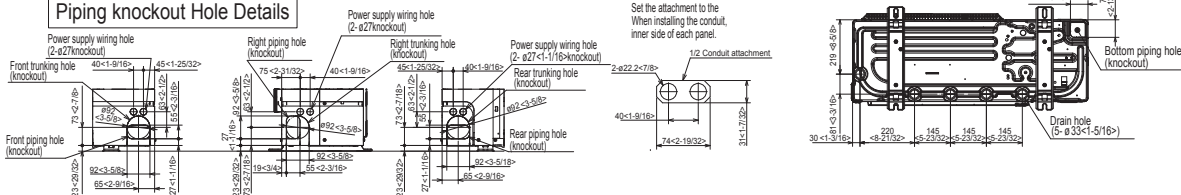


Example of Notes

- ① --- Refrigerant GAS pipe connection (FLARE) $\phi 15.88(5/8\text{F})$
- ② --- Refrigerant LIQUID pipe connection (FLARE) $\phi 9.52(3/8\text{F})$
- *1--- Indication of STOP VALVE connection location.



Piping knockout Hole Details



COOLING & HEATING

1340 Satellite Boulevard. Suwanee, GA 30024
Toll Free: 800-433-4822 www.mehvac.com

